

Walworth County Library Planning Committee
County Board Room 114
Walworth County Government Center
100 W. Walworth Street, Elkhorn, Wisconsin
August 24, 2021

Facilitator Steve Ohs called the meeting to order at 6:15 pm.

Committee Members Present: Brian Broga, Nancy Russell, Emily Kornak, Walter Burkhalter, Edgar “Skip” Mosshamer, Jill Rodriguez

Excused: Susan Pruessing, Peter Wautlet, Catherine “Katie” James

Walworth County Administrator Ex-Officio Member: Mark Luberda

Public: None

Agenda: Skip Mosshamer moved and Jill Rodriguez seconded to approve the agenda. All were in favor and the motion carried.

Approval of Previous Minutes: Brian Broga moved and Skip Mosshamer seconded to approve the minutes of July 27, 2021. All were in favor and the motion carried.

Public Comment: None

Unfinished Business:

A. Review of Draft Plan Document:

Steve Ohs has presented a revised version of the plan based on information from the previous meetings.

Brian Broga asked that there be definition or glossary section included for better understanding for section 7 such as defining a unit cost. He would also like the section 7.b. describing calculations to be written with a leading zero such as 0.30 to make the numbers clearer. Everyone was in agreement.

Concerning the new paragraph at the end of section 5, the paragraph is good, but the paragraph should reference the table showing the “Municipal Support” graph. The graph should be titled “Municipal Support Per Capita” and have introductory information explaining the data it contains.

For section 6, the words “three-year” should be taken out.

Section 7 contains information about the calculation formula. The committee would like the calculation described better and to show a section with a sample calculation that would be easier to understand. At the beginning of chapter 7, explain there are two pieces. The first section is the total appropriation for Walworth County. Then the next section describes the method of dividing the funds to the libraries. Sections c through e are discussed later in the meeting.

Section 8 addresses the role of the library system in this process. State Statute 43.12(3) defines the role of the system, but there has never been a description included in the county plan. The library system currently serves as a “clearinghouse” for the purposes of calculating, requesting and disbursing county funding for library services. Brian Broga asked that Lakeshores Library System be spelled out rather than just LLS Board. Steve Ohs has tried to maintain generic wording of “regional public library system” because there may be a merge in the near future. Mark Luberda noted that in another year the plan will need to be reviewed because a motion from

the previous meeting requires the funding to be reviewed after one year. He also noted that an entirely new plan will need to be written should a merge take place.

Section 9 is listed as an item on the agenda later.

B. Presentation of distribution based on prior motion:

There are two pages of calculations in county funding and another page with adjacent county funding. These two calculations will be the total amount of the Walworth County request. Brian Broga asked that these calculations be shown completely. There should be columns showing the 70% required amount and the additional 30% and how that is divided. Because this spreadsheet is actually based on an older version, this needs to be updated.

In discussing the previous meeting's motion approving a calculation, Steve noted that the previous spreadsheet was done with 2019 data and needed to be updated to 2020 per statutes. Mark Lubberda agreed and asked that the committee move on with the agenda and bring this back to the next meeting with corrected columns using 2020 data. Correct information has been given to library directors based on 2020 data. A corrected spreadsheet will be sent out to the committee members based on all of the information needed including the 2020 data. The entire section will be reviewed again at the next committee meeting.

New Business:

A. Libraries in Adjacent Counties:

Section 7 has three sections concerning funding to adjacent counties. Walworth County funding also goes to libraries in Racine County, Rock County, and Jefferson County for services provided to residents without a home municipal library. There are also two municipalities (Burlington and Whitewater) that have portions of their community within Walworth County. The committee may want to approve funding for those municipalities separately. Statutes require there be intersystem agreements between counties outside of that regional system. For Racine County there are a number of different ideas on how to fund. In the past, Racine County libraries were funded in the same manner as the Walworth County libraries. The funding followed three-year averages and "normalized" costs per unit. Brian Broga would like the Racine County libraries treated the same as the Walworth County libraries for funding. There was discussion describing how the counties reimburse adjacent county libraries. (Walworth County libraries receive funding from all adjacent counties for usage by Walworth County residents without a library). There was also a discussion about intersystem agreements and whether they should be referenced in this plan. Walter Burkhalter doesn't feel the intersystem agreements should be referenced in this plan because they have separate statutes explaining their requirements. Mark Lubberda would like to go over the statutes. This item will be brought back to the next meeting.

B. Library Standards:

There are currently three standards included in the Walworth County plan: the number of internet access devices for in library usage per 1,000 in service population, the hours open and the material expenditures per capita. Walter Burkhalter explained that in the past the standards put into the Walworth County plan should only have pertained to the funding over the 70% minimum. There should not be any standards considered for the statutory minimum funding. Walter would like Steve Ohs to ask DPI if there needs to be a public hearing if the standards are changed in the county plan.

Skip Mosshamer moved that the standards be eliminated from this document. Emily Kornak seconded this. Brian Broga asked if the standards are required for this plan. Mark Lubberda noted that Walworth County's current ordinance requires standards. However, those standards could be basic minimums as they are currently listed in the newest version of the *Wisconsin Public Library Standards*. Items could be picked from the categories of "Governance", "Administration", "Collections and Resources", and "Programs and Services". Emily Kornak noted that the county appoints trustees to each library board to ensure that the library is serving the

entire population as they should be. The standards that are in the current plan concern matters that should be decided by the individual library board. It was noted that there are no other counties in Wisconsin that require these level of standards be used in order to receive funding. Skip Mosshamer volunteered to go to a County Board meeting to explain why meeting these standards can hinder the library. Nancy Russell commented that the pandemic is an example of how standards cannot be met. She also noted that Lake Geneva is now undergoing a construction project which will also make it difficult to meet standards. A suggestion was made to decide on certain standards to use and then list them in an appendix to the county plan. Steve Ohs will ask the libraries for input on the standards to use. At this time a roll call vote was taken on the original motion to eliminate the standards from the document. Voting No: Kornak, Rodriguez, Broga. Voting Yes: Mosshamer, Russell, Burkhalter. The motion failed to pass.

Nancy Russell moved and Brian Broga seconded to bring this discussion back to the next meeting. All were in favor and the motion passed.

Next meeting: Steve Ohs will send out a doodle poll to find a couple of dates for the next meetings. A revised plan including recommended standards and a revised section showing the funding calculations will be discussed at the next meeting.

Adjournment: Skip Mosshamer made a motion to adjourn and Emily Kornak seconded. The committee adjourned at 7:52 pm.

Notes recorded by:
Janice Martin, Office Manager for Lakeshores Library System

Facilitator's Report -- 2021.09.30 WCLPC Meeting 5

Greetings! Here is my Facilitator's Report for our upcoming meeting of the Walworth County Library Planning Committee.

Overview of changes made to the draft plan:

Following a review of the minutes from meeting #4, I have made the requested changes to the language in the draft plan for clarification and tone. I have also added a substantial amount of new content, that can be taken by the committee as a recommendation for inclusion (highlighted in the updated draft in red text).

Presentation of distribution based on prior motion:

The document entitled "2022 Distributions - Walworth County Library Funding Work Book" in your packets presents a complete set of distributions to all eligible libraries according to the formula choices in the current draft plan. For the set of distributions to the home-county libraries, please refer to the second sheet of the workbook.

Libraries in adjacent counties:

Draft language has been added to the draft plan (as section nine) that would address funding to libraries in adjacent counties, in a complete way, in a manner that is generally very consistent with what those libraries have experienced over many years. Specific steps for performing each calculation are included.

County plans of library service must also include how libraries in adjacent counties are to be funded. Historically, the libraries in Racine County - also members of lakeshores library system - have received reimbursement payments from Walworth County based on the same average per-circulation rate as the libraries in Walworth County (on the same terms). Similarly, Racine County has reimbursed libraries in Walworth County at 100% of the rate specified in the Walworth County Plan. Thus it can be said that the counties of Racine and Walworth have, historically, reimbursed across county boundaries between each other reciprocally, and the rate of that reimbursement is basically 100%. All other libraries in adjacent counties that are not members of lakeshores library system have historically received reimbursement consistent with 70% of their cost of service. Therefore:

- The draft text of the current plan version utilizes the same formula and method of calculation as home-county libraries for the separate group of libraries in Racine County.
- The draft text of the current plan uses a simplified formula that calculates payments to all other libraries in adjacent counties based on 70% of the formula in the statutes.
- For any libraries having municipal territory in two or more counties, the text of the current draft plan links the reimbursement rate to regional library system affiliation, as this seems the simplest means available to make the distinction.

Standards:

Following the discussion last time I have selected a number of basic service standards from the 2016 edition of the voluntary public library standards, as promulgated by DPI, and added them to the draft plan in section eleven. I believe this set of standards would adequately align with the county's ordinance framework, while not creating any undue burden for the libraries.

Future Planning Section:

I have added two paragraphs of content to section twelve of the draft. The first section indicates, per previous discussions, that the WCLPC wants to meet in 2022 to evaluate performance of the formula. I used the term “may” in this passage - the committee might wish to make this more concrete by changing “may” to “shall”. The second paragraph indicates that planning is under way for the formation of a joint library among three municipalities in the area of East Troy. The WCLPC does not have responsibility for this project, but it is a regional development that warrants mention in the plan.

A Deep Dive Into Appendix A - Walworth County Library Funding Work Book:

This document is contained in your packet, and is intended to be packaged into the plan as an appendix. It is designed to be used as an annual template by Lakeshores Library System and Walworth County. Using this template, annual library data can be extracted from DPI’s database, input into the workbook, and used to efficiently generate all of the necessary payments.

Each data cell in the workbook has been given a value ID that corresponds with the associated section and calculation step of the written plan. The intent of this is to aid the reader in understanding where every number in the workbook comes from, if need be.

The overall workbook is organized into five sheets. The first sheet presents an overview of the grand total request to the county, broken-down by library group. The second sheet shows detailed calculations for the home-county libraries. The third sheet shows detailed calculations for libraries in Racine County (also members of lakeshores library system, but in an adjacent county). The fourth sheet shows detailed calculations for all other libraries in adjacent counties (not members of lakeshores library system). The fifth and final sheet is a formula key that defines the source of every value in the workbook.

Approval of Plan:

I believe the changes suggested by the committee last time, as well as the recommended language I have added to the draft puts us very close to - or *at* - the finish line. Depending on the pleasure of the committee, a vote to approve (or to approve with changes logged during the actual meeting) may be in order. Such a vote could be paired with a directive to forward to county administration for subsequent recommendation to the County Board of Supervisors for approval.

This concludes my report. Please let me know if I can answer any questions before or during the meeting.

Respectfully submitted,

Steve Ohs
Facilitator, Walworth County Library Planning Committee
Administrator, Lakeshores Library System

DRAFT

Walworth County Plan of Library Service

Developed Summer/Fall, 2021

1. Statement of Purpose

The Walworth County Plan of Library Service shall promote a high quality of library service, support municipal public libraries, and enhance regional coordination. The plan shall include full access by residents to all public libraries participating in the regional public library system, while providing for reimbursement for that access by means of a prudent funding formula based on the state statutes.

2. Background

Plans of library service are developed by county-appointed planning committees and approved by county boards of supervisors. Wisconsin statutes require that counties must develop and maintain these plans in order to participate at the county level in regional public library systems. At minimum, plans must 1.) ensure access to library services for county residents of municipalities that do not have libraries, 2.) allow any resident of the county to use any library within the system that they choose, 3.) define a method by which libraries are reimbursed for expenses incurred in order to provide service to residents of the county without access to a home municipal library, and 4.) describe the allocation of county trustees on the regional public library system board. Such plans may also include any other library-related issues deemed important by the committees tasked with developing them.

Walworth County joined the Lakeshores Library System in 1983. County-wide library planning activities occurred sporadically until creation of the statutes related to library planning and funding. During the early 2000's, a library planning committee was appointed consisting of system board trustees, county supervisors, and citizen representatives. This was followed by a period where only the library system trustees appointed by the county served as the the county's library planning committee. In 2021 the library planning committee was reconstituted to include two library directors, two library board trustees, two library system trustees, one citizen member, and county administration in an ex-officio role.

3. Regional Library System Membership

Walworth County participates with Racine County as member counties of a regional public library system - Lakeshores Library System. Regional public library systems exist to help coordinate the activities of individual member libraries, with an emphasis on finding economies of scale. LLS is governed by a fifteen member board of trustees. System trustees are appointed by each county's executive or board chair, with confirmation by the county boards of

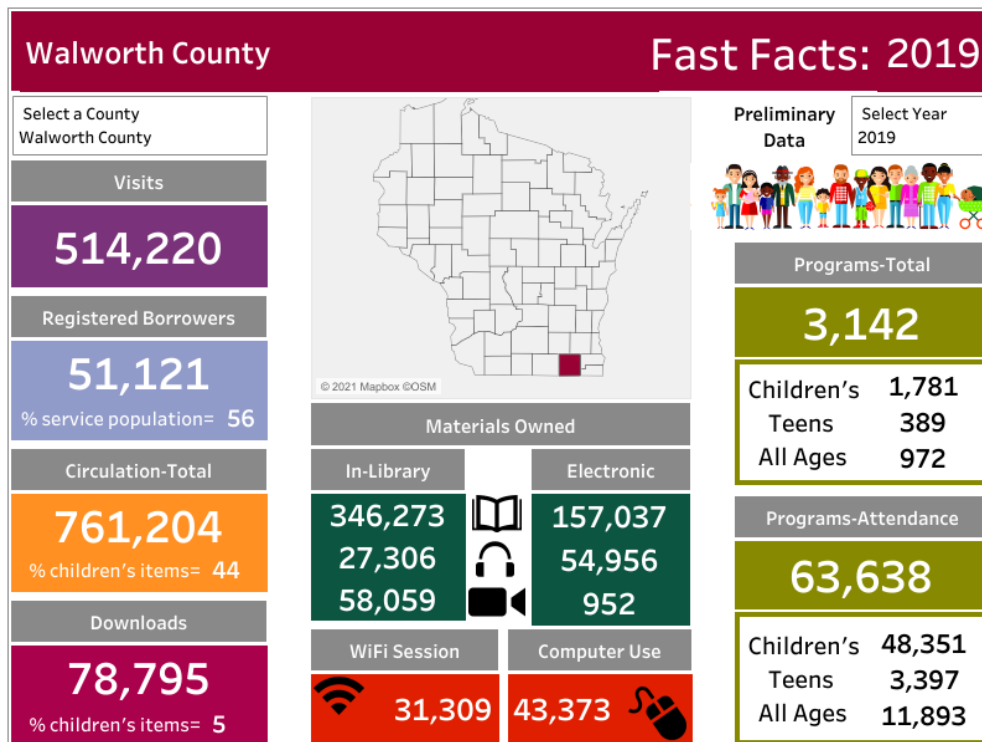
supervisors. System trustees are apportioned according to county population. Per original agreements and respective county ordinances, Walworth County appoints six trustees to the system board, and Racine County appoints nine, for a total of fifteen trustees. Each county may appoint one county board member to the system board. Library system board trustees serve terms of three years, commencing on January 1st. The number of successive terms is not limited by the statutes.

Historically, Lakeshores Library System has served as a clearinghouse with relation to county reimbursement for library service costs to residents without access to home municipal libraries. The library system facilitates the process of requesting reimbursement funding from the county, and manages the distribution of payments among the libraries. This is done according to the approved funding formula in place within the currently valid plan of library service.

4. Current library services to county residents

Each municipal public library in Walworth County is independently governed by a municipal library board. Library board trustees are appointed by a municipal chair, president, or mayor, and approved by the municipal board. Additional library board members may be appointed by the county board under certain conditions. Libraries offer a wide range of services to residents of the county. These services vary from community to community based upon local needs. Some services are coordinated across the entire region. **Appendix Document A** contains a representative sample of the various services provided to county residents.

The following graphic details a number of key library service metrics for Walworth County for a representative year:



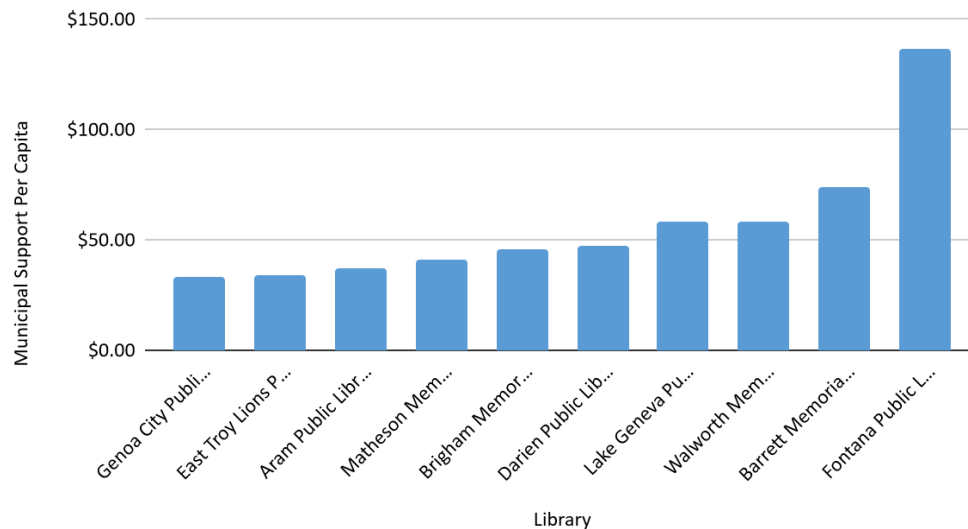
5. Funding of library services to county residents

Library services throughout Walworth County are supported by several primary sources of funding. The ultimate purpose behind the Wisconsin model of funding for libraries is to ensure that every citizen of the state may access public library services regardless of where they live.

- Municipal tax revenue supports service to municipal residents (as well as capital costs associated with construction, maintenance, etc.).
- County tax revenue supports service to residents without access to a public library in their home municipality.
- Revenue from adjacent counties supports services to people (also without access to a home library) who cross county boundaries in order to obtain library service.
- State funding supports the activities of regional public library systems in reducing the operating costs of member libraries through cooperative approaches to purchasing and other regional services.
- State funding supports a large collection of digital resources for education, utility, and enrichment (examples: consumer reports, auto repair source, and teacher reference center).

6. Municipal Support Per Capita

Municipal Support Per Capita vs. Library



Note: graph data from 2019

7. Acknowledgement of Local Municipal Library Funding Decisions

This plan recognizes the right of governing bodies of municipalities with libraries to set annual funding levels according to local needs and priorities. Because the choices of municipal governments can affect library service on a regional level, this plan also recommends that municipalities consider county funding as supplementary, not as a replacement. The purpose of county funding for library services is to reimburse libraries for expenditures made in the previous year to serve people who live outside of municipal tax bases. Thus, municipalities are advised to exercise caution when considering reductions to local library funding in response to occasional upward fluctuations in county library funding.

8. Data for the Annual Library Funding Cycle

Per Wis. Stat. 43.12(1)(b), library expenditures and loan statistics from the previous complete calendar year are used as the basis for calculations during the request year, for payments disbursed during the following tax year.

Example: 2020 library data is used as the basis of a request made during 2021, for disbursement in 2022. This provides counties with precision in setting levy amounts for the following year in accordance with their budget procedures.

9. County Funding for Library Services to County Residents Without Home Libraries

a. Total appropriation to home-county libraries:

Walworth County shall appropriate a total amount to be distributed among the libraries that identify as “home-county” (Aram Public Library, East Troy Lions Public Library, Matheson Memorial Library, Darien Public Library, Brigham Memorial Library, Walworth Memorial Library, Fontana Public Library, Barrett Memorial Library, Lake Geneva Public Library, and Genoa City Public Library). The total amount shall be 100% of the combined expenditures, in the previous year, for service to county residents without a home library.¹

Calculation procedure:

Step One: For each library, determine total operating expenses (A-1), expenses from federal sources (A-2), and the total number of loans made in the previous year (A-3).

Step Two: For each library, subtract A-2 from A-1, then divide the result by A-3. The result is the service unit cost (A-4).

Step Three: For each library, determine the number of loans made in the previous year to county residents without a home library (A-5).

¹ Calculation of the net appropriation is based on 100% of actual costs according to the method in [Wis. Stat. 43.12\(1\)\(b\)](#).

Step Four: For each library, multiply A-4 by A-5. The result is the cost of service provided to county residents without a home library (A-6).

Step Five: Add all library A-6 values together. The result is the total appropriation for home county libraries (A-7).

b. Individual Payments to home-county libraries:

Payments to individual home-county libraries shall consist of the sum of a core amount and a variable amount. The core amount shall be 70% of the individual library's costs incurred in the previous year to provide service to county residents without access to a library². The variable amount shall be 30% of the total appropriation to home-county libraries, multiplied by the given library's percentage of total loans made by libraries in the county to residents of the county who live in municipalities without libraries.

Calculation procedure:

Step Six: Multiply the amount of the total appropriation to home-county libraries (A-7) by 0.3 (30%) to determine the variable amount to be distributed (B-1).

Step Seven: Determine the total number of loans made to residents of the county who live in municipalities without libraries (B-2).

Step Eight: For each library, multiply A-6 by 0.7 (70%) to determine the library's core funding amount (B-3).

Step Nine: For each library, divide A-5 by B-2. The result is the percentage of total county use by residents without libraries (B-4).

Step Ten: For each library, multiply B-1 by B-4. The result is the individual library's variable funding distribution (B-5).

Step Eleven: For each library, add B-3 and B-5 together. The result is the library's total payment for the following year (B-6).

Step Twelve: Add the B-6 values of all home county libraries together. The result is the total payments to home county libraries (B-7). NOTE: this value should match A-7.

c. Payments to libraries in adjacent member counties of the regional library system:

Walworth County shall appropriate funding to be distributed among libraries in adjacent counties that are members of the same regional library system (Burlington Public Library, Graham Public Library - Union Grove, Racine Public Library, Rochester Public Library, and Waterford Public Library). The total amount appropriated for these libraries shall be 100% of the combined expenditures, in the previous year, for service to county residents without a home library.³

² 70% of actual costs according to the method in [Wis. Stat. 43.12\(1\)\(b\)](#).

³ Calculation of the net appropriation is based on 100% of actual costs according to the method in [Wis. Stat. 43.12\(1\)\(b\)](#).

Calculation procedure: On a separate sheet of the same work book, utilize the same method of calculation used for home-county libraries for the group of libraries in adjacent counties that are also members of the same regional library system.

d. Payments to libraries in other adjacent counties:

Payments to libraries in adjacent counties that are not members of the same regional library system shall equal 70% of each library's expenditures, in the previous year, for service to county residents without a home library.⁴

Calculation procedure:

Step One: On a separate sheet of the same work book, for each library in an adjacent county that is not a member of the same regional library system, determine total operating expenses (D-1), expenses from federal sources (D-2), and the total number of loans made in the previous year (D-3).

Step Two: For each library, subtract D-2 from D-1, then divide by D-3. The result is the service unit cost (D-4).

Step Three: For each library, determine the number of loans made in the previous year to county residents without a home library (D-5).

Step Four: For each library, multiply D-4 by D-5 to determine the cost of service provided to county residents without a home library (D-6).

Step Five: For each library, multiply D-6 by 0.7 (70%) to determine individual payment amounts (D-7).

Step Six: Add all library D-7 values together. The result is the total appropriation to libraries in adjacent counties that are not members of the same regional library system (D-8).

e. Libraries with municipal territory in the home county and an adjacent county:

Payments to libraries in adjacent counties with municipal territory also in Walworth County (Burlington, Mukwonago, Whitewater) shall be made according to the regional library system affiliation of the library. Payments to such libraries that are members of the same regional library system shall be calculated according to section (c), and payments to such libraries that are not members of the same regional library system shall be calculated according to section (d).

10. Role of the Regional Public Library System:

- a. According to [Wis. Stat. 43.12\(3\)](#), the county may, by means of an agreement with the system board, designate the regional library system of which it is a member to serve as

⁴ 70% of actual costs according to the method in [Wis. Stat. 43.12\(1\)\(b\)](#).

a clearinghouse for the purposes of calculating, requesting, receiving and disbursing county funding for library services according to this plan of library service.

- b. The regional library system board and Walworth County administration are encouraged to create and maintain an agreement or memorandum of understanding to define the roles and actions necessary to support the annual implementation of the funding framework of this plan of library service.

11. Library Standards for Libraries in Walworth County:

[Wis. Stat. 43.11\(3\)\(d\)](#) provides for minimum standards for library operations in the county to be established. Therefore, in order to qualify for payments that exceed the statutory minimum per this plan, libraries in Walworth County shall meet the following basic standards:

- a. All statutory requirements for membership in a regional library system;
- b. Develop and adopt policies for the library's operation;
- c. Follow fiscal procedures consistent with state law, library policy, and local government requirements in preparing, presenting, and administering its budget;
- d. Materials are purchased at regular intervals throughout the year to ensure a steady flow of new materials for the public;
- e. The library provides access to online resources, including downloadable materials, appropriate to its community and promotes the use of online resources such as on their website and within the library;
- f. The library provides access to resources in formats appropriate to the needs of all population groups in the community;
- g. The library provides interlibrary loan services to customers of all ages. The library submits its holdings information to shared databases and participates as a lender and a borrower;
- h. The library provides adequate handicapped accessible parking spaces, per Wis. Stat. § 346.503(1), and any local ordinance;
- i. The library provides free wireless internet access.

Any library determined by the county or regional library system to be out of compliance with the above standards shall be required to develop a compliance plan within six weeks of the determination. The compliance plan shall include a timeline for achieving compliance with the standards. Any library failing to achieve compliance within the timeline of the submitted plan shall be subject to a reduction in county funding to the statutory minimum level.

12. Future plans (indicate future plans for evaluating and updating of your county plan)

- a. The Walworth County Planning Committee may convene on or about June 1, 2022 to evaluate the performance of the updated funding formula contained in this plan of library service.
- b. It is anticipated that a joint library may be created in future years between the municipalities of Village of East Troy, Town of East Troy, and Town of Troy. If created, two additional municipalities (Town of East Troy and Town of Troy) may become exempt from the county library levy. To prepare other municipalities that maintain libraries in the county for any associated upward shift in minimum exemption levels, the municipalities involved in the joint library project are encouraged to communicate their intent as early as possible to county administration and the regional library system.
- c. The Lakeshores Library System and Arrowhead Library System have initiated a project to explore a possible merger to form a new regional library system encompassing the counties of Racine, Rock, and Walworth. Should a merger occur, the plans of library service for each county must be revised to incorporate this change.

13. Plan Appendices:

- a. Appendix A - Funding formula spreadsheet excel template
- b. Appendix B - List of planning committee members
- c. Appendix C - Chapter 43 of the Wisconsin State Statutes
- d. Appendix D - List of services offered by public libraries in Walworth County

Walworth County Library Funding Workbook	
Funding Overview	
Home County:	#DIV/0!
Adjacent County Also In-Sys:	#DIV/0!
All Other Adjacent County:	#DIV/0!
Grand Total County Request:	#DIV/0!

Home County Library	Step One			Step Two	Step Three	Step Four
	Operating Expenditures (A-1)	Expenditures from Federal Sources (A-2)	Total Loans Made (A-3)	Service Unit Cost (A-4)	Number of Loans Made to County Residents Without a Home Library (A-5)	Cost of Service provided to County Residents Without a Home Library (A-6)
Aram Public Library	\$ -	\$ -	-	#DIV/0!	-	#DIV/0!
Barrett Memorial Library	\$ -	\$ -	-	#DIV/0!	-	#DIV/0!
Brigham Memorial Library	\$ -	\$ -	-	#DIV/0!	-	#DIV/0!
Darien Public Library	\$ -	\$ -	-	#DIV/0!	-	#DIV/0!
East Troy Lions Public Library	\$ -	\$ -	-	#DIV/0!	-	#DIV/0!
Fontana Public Library	\$ -	\$ -	-	#DIV/0!	-	#DIV/0!
Genoa City Public Library	\$ -	\$ -	-	#DIV/0!	-	#DIV/0!
Lake Geneva Public Library	\$ -	\$ -	-	#DIV/0!	-	#DIV/0!
Matheson Memorial Library	\$ -	\$ -	-	#DIV/0!	-	#DIV/0!
Walworth Memorial Library	\$ -	\$ -	-	#DIV/0!	-	#DIV/0!

Step Five	
Total appropriation to home county libraries (A-7):	#DIV/0!

Step Six	
Variable Amount to be Distributed (B-1):	#DIV/0!

Step Seven	
Total number of loans made to to residents of the county who live in municipalities without libraries (B-2):	-

Home County Library	Step Eight Core Funding Amount (B-3)	Step Nine Percentage of Total County Use by Residents Without Libraries (B-4)	Step Ten Variable Funding Amount (B-5)	Step Eleven Total Payment for the Following Year (B-6)
Aram Public Library	#DIV/0!	#DIV/0!	#DIV/0!	#DIV/0!
Barrett Memorial Library	#DIV/0!	#DIV/0!	#DIV/0!	#DIV/0!
Brigham Memorial Library	#DIV/0!	#DIV/0!	#DIV/0!	#DIV/0!
Darien Public Library	#DIV/0!	#DIV/0!	#DIV/0!	#DIV/0!
East Troy Lions Public Library	#DIV/0!	#DIV/0!	#DIV/0!	#DIV/0!
Fontana Public Library	#DIV/0!	#DIV/0!	#DIV/0!	#DIV/0!
Genoa City Public Library	#DIV/0!	#DIV/0!	#DIV/0!	#DIV/0!
Lake Geneva Public Library	#DIV/0!	#DIV/0!	#DIV/0!	#DIV/0!
Matheson Memorial Library	#DIV/0!	#DIV/0!	#DIV/0!	#DIV/0!
Walworth Memorial Library	#DIV/0!	#DIV/0!	#DIV/0!	#DIV/0!

Step Twelve	
Total of payments to home-county libraries (B-7):	#DIV/0!

*All totals rounded to the nearest dollar

Adjacent County Library (In-System)	Step One			Step Two	Step Three	Step Four
	Operating Expenditures (C-1)	Expenditures from Federal Sources (C-2)	Total Loans Made (C-3)	Service Unit Cost (C-4)	Number of Loans Made to County Residents Without a Home Library (C-5)	Cost of Service provided to County Residents Without a Home Library
Burlington Public Library	\$ -	\$ -	-	#DIV/0!	-	#DIV/0!
Graham Public Library	\$ -	\$ -	-	#DIV/0!	-	#DIV/0!
Racine Public Library	\$ -	\$ -	-	#DIV/0!	-	#DIV/0!
Rochester Public Library	\$ -	\$ -	-	#DIV/0!	-	#DIV/0!
Waterford Public Library	\$ -	\$ -	-	#DIV/0!	-	#DIV/0!
Step Five						
Total appropriation to adjacent county system member libraries (C-7):						#DIV/0!
Step Six						
Variable Amount to be Distributed (C-8):						#DIV/0!
Step Seven						
Total number of loans made to residents of the county who live in municipalities without libraries (C-9):						-
			Step Eight	Step Nine	Step Ten	Step Eleven
	Adjacent County Library (In-System)		Core Funding Amount (C-10)	Percentage of Total County Use by Residents Without Libraries (C-11)	Variable Funding Amount (C-12)	Total Payment for the Following Year (C-13)
	Burlington Public Library		#DIV/0!	#DIV/0!	#DIV/0!	#DIV/0!
	Graham Public Library		#DIV/0!	#DIV/0!	#DIV/0!	#DIV/0!
	Racine Public Library		#DIV/0!	#DIV/0!	#DIV/0!	#DIV/0!
	Rochester Public Library		#DIV/0!	#DIV/0!	#DIV/0!	#DIV/0!
	Waterford Public Library		#DIV/0!	#DIV/0!	#DIV/0!	#DIV/0!
Step Twelve						
Total of payments to adjacent-county system member libraries (C-14):						#DIV/0!
*All totals rounded to the nearest dollar						

Adjacent County Library (Not In-System)	County	Step One			Step Two	Step Three	Step Four	Step Five
		Operating Expenditures (D-1)	Expenditures from Federal Sources (D-2)	Total Loans Made (D-3)	Service Unit Cost (D-4)	Number of Loans Made to County Residents Without a Home Library (D-5)	Cost of Service provided to County Residents Without a Home Library (D-6)	Payment Amount (D-7)
Ft. Atkinson	Jefferson	\$ -	\$ -	-	#DIV/0!	-	#DIV/0!	#DIV/0!
Jefferson	Jefferson	\$ -	\$ -	-	#DIV/0!	-	#DIV/0!	#DIV/0!
Lake Mills	Jefferson	\$ -	\$ -	-	#DIV/0!	-	#DIV/0!	#DIV/0!
Palmyra	Jefferson	\$ -	\$ -	-	#DIV/0!	-	#DIV/0!	#DIV/0!
Waterloo	Jefferson	\$ -	\$ -	-	#DIV/0!	-	#DIV/0!	#DIV/0!
Watertown	Jefferson	\$ -	\$ -	-	#DIV/0!	-	#DIV/0!	#DIV/0!
Whitewater	Jefferson	\$ -	\$ -	-	#DIV/0!	-	#DIV/0!	#DIV/0!
Community Library	Kenosha	\$ -	\$ -	-	#DIV/0!	-	#DIV/0!	#DIV/0!
Kenosha Public Library	Kenosha	\$ -	\$ -	-	#DIV/0!	-	#DIV/0!	#DIV/0!
Beloit	Rock	\$ -	\$ -	-	#DIV/0!	-	#DIV/0!	#DIV/0!
Clinton	Rock	\$ -	\$ -	-	#DIV/0!	-	#DIV/0!	#DIV/0!
Eager Free Public Library	Rock	\$ -	\$ -	-	#DIV/0!	-	#DIV/0!	#DIV/0!
Edgerton	Rock	\$ -	\$ -	-	#DIV/0!	-	#DIV/0!	#DIV/0!
Hedberg Public Library	Rock	\$ -	\$ -	-	#DIV/0!	-	#DIV/0!	#DIV/0!
Milton	Rock	\$ -	\$ -	-	#DIV/0!	-	#DIV/0!	#DIV/0!
Orfordville	Rock	\$ -	\$ -	-	#DIV/0!	-	#DIV/0!	#DIV/0!
Alice Baker Memorial Public Library	Waukesha	\$ -	\$ -	-	#DIV/0!	-	#DIV/0!	#DIV/0!
Barbara Sanborn Public Library	Waukesha	\$ -	\$ -	-	#DIV/0!	-	#DIV/0!	#DIV/0!
Big Bend Village Library	Waukesha	\$ -	\$ -	-	#DIV/0!	-	#DIV/0!	#DIV/0!
Brookfield Public Library	Waukesha	\$ -	\$ -	-	#DIV/0!	-	#DIV/0!	#DIV/0!
Butler Public Library	Waukesha	\$ -	\$ -	-	#DIV/0!	-	#DIV/0!	#DIV/0!
Delafield Public Library	Waukesha	\$ -	\$ -	-	#DIV/0!	-	#DIV/0!	#DIV/0!
Elm Grove Public Library	Waukesha	\$ -	\$ -	-	#DIV/0!	-	#DIV/0!	#DIV/0!
Hartland Public Library	Waukesha	\$ -	\$ -	-	#DIV/0!	-	#DIV/0!	#DIV/0!
Menomonee Falls Public Library	Waukesha	\$ -	\$ -	-	#DIV/0!	-	#DIV/0!	#DIV/0!
Mukwonago Community Library	Waukesha	\$ -	\$ -	-	#DIV/0!	-	#DIV/0!	#DIV/0!
Muskego Public Library	Waukesha	\$ -	\$ -	-	#DIV/0!	-	#DIV/0!	#DIV/0!
New Berlin Public Library	Waukesha	\$ -	\$ -	-	#DIV/0!	-	#DIV/0!	#DIV/0!
Oconomowoc Public Library	Waukesha	\$ -	\$ -	-	#DIV/0!	-	#DIV/0!	#DIV/0!
Pauline Haass Public Library	Waukesha	\$ -	\$ -	-	#DIV/0!	-	#DIV/0!	#DIV/0!
Pewaukee Public Library	Waukesha	\$ -	\$ -	-	#DIV/0!	-	#DIV/0!	#DIV/0!
Town Hall Library	Waukesha	\$ -	\$ -	-	#DIV/0!	-	#DIV/0!	#DIV/0!
Waukesha Public Library	Waukesha	\$ -	\$ -	-	#DIV/0!	-	#DIV/0!	#DIV/0!
Total Walworth County Funding Requested by System Non-Member Libraries in Adjacent Counties for 2022 (D-8):								#DIV/0!
*All totals rounded to the nearest dollar								

DRAFT Appendix A - Walworth County Library Funding Work Book.xlsx000000Formula Key

Value	Description	Derived from:
A1	Operating Expenditures	Previous year data reported by library
A2	Expenditures from Federal Sources	Previous year data reported by library
A3	Total Loans Made	Previous year data reported by library
A4	Service Unit Cost	A1 minus A2, divided by A3
A5	Number of Loans Made to County Residents Without a Home Library	Previous year data reported by library
A6	Cost of Service provided to County Residents Without a Home Library	A4 multiplied by A5
A7	Total appropriation to home county libraries	A6 values of all home county libraries added together
B1	Variable Amount to be Distributed	A7, multiplied by 0.3
B2	Total number of loans made to residents of the county who live in municipalities without libraries	A5 values of all home county libraries added together
B3	Core Funding Amount	A6 multiplied by 0.7
B4	Percentage of Total County Use by Residents Without Libraries	A5 divided by B2
B5	Variable Funding Amount	B4 multiplied by B1
B6	Total Payment for the Following Year	B3 plus B5
B7	Total of payments to home-county libraries	B6 values of all home county libraries added together
C1	Operating Expenditures	Previous year data reported by library
C2	Expenditures from Federal Sources	Previous year data reported by library
C3	Total Loans Made	Previous year data reported by library
C4	Service Unit Cost	C1 minus C2, divided by C3
C5	Number of Loans Made to County Residents Without a Home Library	Previous year data reported by library
C6	Cost of Service provided to County Residents Without a Home Library	C4 multiplied by C5
C7	Total appropriation to adjacent county system member libraries	C6 values of all adjacent-county system member libraries added together
C8	Variable Amount to be Distributed	C7 multiplied by 0.3
C9	Total number of loans made to residents of the county who live in municipalities without libraries	C5 values of all adjacent-county system member libraries added together
C10	Core Funding Amount	C6 multiplied by 0.7
C11	Percentage of Total County Use by Residents Without Libraries	C5 divided by C9
C12	Variable Funding Amount	C8 multiplied by C11
C13	Total Payment for the Following Year	C10 plus C12
C14	Total of payments to adjacent-county system member libraries	C13 values of all adjacent-county system member libraries added together
D1	Operating Expenditures	Previous year data reported by library
D2	Expenditures from Federal Sources	Previous year data reported by library
D3	Total Loans Made	Previous year data reported by library
D4	Service Unit Cost	D1 minus D2, divided by D3
D5	Number of Loans Made to County Residents Without a Home Library	Previous year data reported by library
D6	Cost of Service provided to County Residents Without a Home Library	D4 multiplied by D5
D7	Payment Amount	D6 multiplied by 0.7
D8	Total Walworth County Funding Requested by System Non-Member Libraries in Adjacent Counties for 2022	D7 values of all adjacent-county system non-member libraries added together

Walworth County Plan of Library Service

Developed Summer/Fall, 2021

Appendix B - List of Planning Committee Members

Appointed Members:

Susan Pruessing
Walworth County Supervisor
spruessing@walworth.wi.us

Catherine James
Library Board Trustee
kottkekatie@hotmail.com

Nancy Russell -
Walworth County Supervisor
nrussell@co.walworth.wi.us

Brian Broga
Library System Board Trustee
brianbroga@yahoo.com

Emily Kornak
Library Director
ekornak@lakegeneva.lib.wi.us

Jill Rodriguez
Library System Board Trustee
jillrod426@gmail.com

Walter Burkhalter
Library Director
wburkhalter@fontana.lib.wi.us

Peter Wautlet
Citizen Member
Peter.wautlet@bakertilly.com

Edgar "Skip" Mosshamer
Library Board Trustee
gitmsdicti@gmail.com

Ex-Officio Members:

Mark Luberda
County Administrator
mluberda@co.walworth.wi.us

Steve Ohs
Lakeshores Library System
sohs@lakeshores.lib.wi.us

Appendix D - List of Services Offered by Public Libraries in Walworth County

Note to the reader: services offered by public libraries vary from community to community according to local needs. Each library board may establish policies for the use of library materials, assets, and facilities. Some policies are coordinated across the county area, while others are more local in nature.

Circulation of Physical Library Materials

- Books
- Magazines & Newspapers
- DVDs
- Blu-Ray Discs
- Historical Microfilm & Microfiche
- Children's Board Books
- Video Games
- Non-traditional materials such as tools, fishing rods, cameras, kayaks and cake-pans

Electronic Library Materials

- eBooks
- Downloadable Audiobooks
- Downloadable Magazines
- Tablets & eReaders available for checkout
- Self-contained audiobooks available for checkout

Electronic Resources & Databases

- Online language instruction software
- LinkedIn Learning (Online Technology Skill Classes)
- Ancestry.com
- Heritagequest.com
- ReferenceUSA
- Wisconsin Housing Search
- EBSCO Host Database
- Online Auto Repair Reference Center
- Consumer Reports
- Numerous online archives
- Business Source Premier
- Morningstar Research

Employment, Job Skills & Workforce Development Services

- Resume Help
- Basic Computing Instruction
- Gale Courses (300+ online courses)
- Job Boards

Entertainment, Events, Meetings, Etc.

- Local movie nights
- Kid-friendly performers
- Summer reading program
- Storytimes
- History lectures
- Author visits & book signings
- Meeting rooms available for public/municipal/county use
- After-school events (math clubs, etc.)
- Book clubs
- Craft nights

Other Services

- Loanable wireless hotspots
- In-person, telephone or email/chat based reference librarian service
- Community meeting rooms
- Study rooms
- High-speed broadband internet access
- Fax services
- Public computers
- Photocopiers
- Microfilm readers
- 3d Printers
- Robotics kits
- Memory kits for seniors
- Craft kits
- "Take and Make" kits
- STEM education kits
- Learning launchpad devices for kids
- VHS to DVD converters
- Tax help workshops
- School visits & collaboration with school media programs
- 1,000 Books Before Kindergarten program
- Curated resource lists for small business development

Walworth County Library Funding Workbook			
Funding Overview			
		Home County:	\$ 1,469,333
		Adjacent County Also In-System:	\$ 125,046
		All Other Adjacent County:	\$ 300,915
		Grand Total County Request:	\$ 1,895,295

Home County Library	Step One			Step Two	Step Three	Step Four
	Operating Expenditures (A-1)	Expenditures from Federal Sources (A-2)	Total Loans Made (A-3)	Service Unit Cost (A-4)	Number of Loans Made to County Residents Without a Home Library (A-5)	Cost of Service provided to County Residents Without a Home Library (A-6)
Aram Public Library	\$ 525,265	\$ -	61,495	\$ 8.54	22,030	\$ 188,171
Barrett Memorial Library	\$ 351,491	\$ -	40,577	\$ 8.66	16,189	\$ 140,234
Brigham Memorial Library	\$ 85,100	\$ -	6,140	\$ 13.86	1,137	\$ 15,759
Darien Public Library	\$ 137,295	\$ -	8,195	\$ 16.75	4,380	\$ 73,380
East Troy Lions Public Library	\$ 258,485	\$ -	22,537	\$ 11.47	10,553	\$ 121,036
Fontana Public Library	\$ 266,042	\$ -	11,625	\$ 22.89	2,500	\$ 57,213
Genoa City Public Library	\$ 190,940	\$ 2,383	24,915	\$ 7.57	11,128	\$ 84,217
Lake Geneva Public Library	\$ 748,591	\$ -	96,366	\$ 7.77	39,058	\$ 303,411
Matheson Memorial Library	\$ 916,537	\$ 3,087	153,366	\$ 5.96	65,016	\$ 387,236
Walworth Memorial Library	\$ 262,030	\$ -	27,447	\$ 9.55	10,336	\$ 98,675

Step Five	
Total appropriation to home county libraries (A-7):	\$ 1,469,333

Step Six	
Variable Amount to be Distributed (B-1):	\$ 440,800

Step Seven	
Total number of loans made to to residents of the county who live in municipalities without libraries (B-2):	182,327

Home County Library	Step Eight	Step Nine	Step Ten	Step Eleven
	Core Funding Amount (B-3)	Percentage of Total County Use by Residents Without Libraries (B-4)	Variable Funding Amount (B-5)	Total Payment for the Following Year (B-6)
Aram Public Library	\$ 131,720	12.08%	\$ 53,260	\$ 184,980
Barrett Memorial Library	\$ 98,164	8.88%	\$ 39,139	\$ 137,303
Brigham Memorial Library	\$ 11,031	0.62%	\$ 2,749	\$ 13,780
Darien Public Library	\$ 51,366	2.40%	\$ 10,589	\$ 61,955
East Troy Lions Public Library	\$ 84,725	5.79%	\$ 25,513	\$ 110,239
Fontana Public Library	\$ 40,049	1.37%	\$ 6,044	\$ 46,093
Genoa City Public Library	\$ 58,952	6.10%	\$ 26,903	\$ 85,855
Lake Geneva Public Library	\$ 212,387	21.42%	\$ 94,428	\$ 306,815
Matheson Memorial Library	\$ 271,065	35.66%	\$ 157,185	\$ 428,250
Walworth Memorial Library	\$ 69,073	5.67%	\$ 24,989	\$ 94,061

Step Twelve	
Total of payments to home-county libraries (B-7):	\$ 1,469,333

*All totals rounded to the nearest dollar

Adjacent County Library (In-System)	Step One			Step Two	Step Three	Step Four
	Operating Expenditures (C-1)	Expenditures from Federal Sources (C-2)	Total Loans Made (C-3)	Service Unit Cost (C-4)	Number of Loans Made to County Residents Without a Home Library (C-5)	Cost of Service provided to County Residents Without a Home Library
Burlington Public Library	\$ 759,069	\$ 7,340	82,324	\$ 9.13	10,654	\$ 97,285
Graham Public Library	\$ 299,313	\$ 3,692	39,686	\$ 7.45	188	\$ 1,400
Racine Public Library	\$ 4,144,230	\$ -	301,298	\$ 13.75	37	\$ 509
Rochester Public Library	\$ 161,383	\$ -	15,412	\$ 10.47	461	\$ 4,827
Waterford Public Library	\$ 685,933	\$ -	125,446	\$ 5.47	3,845	\$ 21,024
Step Five						
Total appropriation to adjacent county system member libraries (C-7):						\$ 125,046
Step Six						
Variable Amount to be Distributed (C-8):						\$ 37,514
Step Seven						
Total number of loans made to residents of the county who live in municipalities without libraries (C-9):						15,185
			Step Eight	Step Nine	Step Ten	Step Eleven
	Adjacent County Library (In-System)		Core Funding Amount (C-10)	Percentage of Total County Use by Residents Without Libraries (C-11)	Variable Funding Amount (C-12)	Total Payment for the Following Year (C-13)
	Burlington Public Library		\$ 68,100	70.16%	\$ 26,320	\$ 94,420
	Graham Public Library		\$ 980	1.24%	\$ 464	\$ 1,445
	Racine Public Library		\$ 356	0.24%	\$ 91	\$ 448
	Rochester Public Library		\$ 3,379	3.04%	\$ 1,139	\$ 4,518
	Waterford Public Library		\$ 14,717	25.32%	\$ 9,499	\$ 24,216
Step Twelve						
Total of payments to adjacent-county system member libraries (C-14):						\$ 125,046
*All totals rounded to the nearest dollar						

Adjacent CountyLibrary (Not In-System)	County	Step One			Step Two	Step Three	Step Four	Step Five
		Operating Expenditures (D-1)	Expenditures from Federal Sources (D-2)	Total Loans Made (D-3)	Service Unit Cost (D-4)	Number of Loans Made to County Residents Without a Home Library (D-5)	Cost of Service provided to County Residents Without a Home Library (D-6)	Payment Amount (D-7)
Ft. Atkinson	Jefferson	\$ 873,959	\$ 1,354	126,480	\$ 6.90	289	\$ 1,994	\$ 1,396
Jefferson	Jefferson	\$ 567,780	\$ 808	63,380	\$ 8.95	115	\$ 1,029	\$ 720
Lake Mills	Jefferson	\$ 399,182	\$ 954	68,514	\$ 5.81	-	\$ -	\$ -
Palmyra	Jefferson	\$ 129,444	\$ 1,368	17,134	\$ 7.47	344	\$ 2,571	\$ 1,800
Waterloo	Jefferson	\$ 368,641	\$ 496	37,037	\$ 9.94	-	\$ -	\$ -
Watertown	Jefferson	\$ 933,387	\$ 6,465	185,427	\$ 5.00	-	\$ -	\$ -
Whitewater	Jefferson	\$ 790,730	\$ 1,161	64,442	\$ 12.25	14,396	\$ 176,386	\$ 123,470
Community Library	Kenosha	\$ 1,203,787	\$ -	97,406	\$ 12.36	1,153	\$ 14,249	\$ 9,975
Kenosha Public Library	Kenosha	\$ 6,535,356	\$ -	436,772	\$ 14.96	91	\$ 1,362	\$ 953
Beloit	Rock	\$ 2,176,145	\$ 2,222	152,617	\$ 14.24	400	\$ 5,698	\$ 3,988
Clinton	Rock	\$ 133,297	\$ -	18,798	\$ 7.09	69	\$ 489	\$ 342
Eager Free Public Library	Rock	\$ 366,986	\$ -	33,553	\$ 10.94	62	\$ 678	\$ 475
Edgerton	Rock	\$ 373,034	\$ -	60,414	\$ 6.17	2	\$ 12	\$ 9
Hedberg Public Library	Rock	\$ 3,878,359	\$ 20,546	409,778	\$ 9.41	2,443	\$ 22,999	\$ 16,100
Milton	Rock	\$ 395,112	\$ -	56,310	\$ 7.02	62	\$ 435	\$ 305
Orfordville	Rock	\$ 121,794	\$ -	19,233	\$ 6.33	1	\$ 6	\$ 4
Alice Baker Memorial Public Library	Waukesha	\$ 251,463	\$ 144	30,258	\$ 8.31	-	\$ -	\$ -
Barbara Sanborn Public Library	Waukesha	\$ -	\$ -	-	\$ -	-	\$ -	\$ -
Big Bend Village Library	Waukesha	\$ 75,177	\$ 144	13,216	\$ 5.68	-	\$ -	\$ -
Brookfield Public Library	Waukesha	\$ 3,068,133	\$ -	502,426	\$ 6.11	-	\$ -	\$ -
Butler Public Library	Waukesha	\$ 103,676	\$ 276	26,555	\$ 3.89	-	\$ -	\$ -
Delafield Public Library	Waukesha	\$ 787,347	\$ 1,737	137,806	\$ 5.70	-	\$ -	\$ -
Elm Grove Public Library	Waukesha	\$ 537,673	\$ 10,837	73,562	\$ 7.16	-	\$ -	\$ -
Hartland Public Library	Waukesha	\$ 695,223	\$ 1,808	167,804	\$ 4.13	-	\$ -	\$ -
Menomonee Falls Public Library	Waukesha	\$ 1,932,500	\$ 16,228	230,812	\$ 8.30	-	\$ -	\$ -
Mukwonago Community Library	Waukesha	\$ 962,410	\$ 19,345	220,192	\$ 4.28	-	\$ -	\$ -
Muskego Public Library	Waukesha	\$ 1,282,006	\$ 1,933	177,091	\$ 7.23	-	\$ -	\$ -
New Berlin Public Library	Waukesha	\$ 1,601,044	\$ 143	296,711	\$ 5.40	-	\$ -	\$ -
Oconomowoc Public Library	Waukesha	\$ 1,132,221	\$ 679	228,971	\$ 4.94	-	\$ -	\$ -
Pauline Haass Public Library	Waukesha	\$ 1,141,825	\$ 9,432	255,299	\$ 4.44	-	\$ -	\$ -
Pewaukee Public Library	Waukesha	\$ 1,196,423	\$ 2,542	210,840	\$ 5.66	-	\$ -	\$ -
Town Hall Library	Waukesha	\$ 546,323	\$ 13,339	45,653	\$ 11.67	-	\$ -	\$ -
Waukesha Public Library	Waukesha	\$ 4,106,978	\$ 17,637	541,702	\$ 7.55	-	\$ -	\$ -
Z -Bridges Library System for All Waukesha Co. Libraries (2022 Only)	Waukesha	\$ -	\$ -	-	\$ 9.37	21,555	\$ 201,970	\$ 141,379
Total Walworth County Funding Requested by System Non-Member Libraries in Adjacent Counties for 2022 (D-8):								\$300,915
*All totals rounded to the nearest dollar								

Value	Description	Derived from:		
A1	Operating Expenditures	Previous year data reported by library		
A2	Expenditures from Federal Sources	Previous year data reported by library		
A3	Total Loans Made	Previous year data reported by library		
A4	Service Unit Cost	A1 minus A2, divided by A3		
A5	Number of Loans Made to County Residents Without a Home Library	Previous year data reported by library		
A6	Cost of Service provided to County Residents Without a Home Library	A4 multiplied by A5		
A7	Total appropriation to home county libraries	A6 values of all home county libraries added together		
B1	Variable Amount to be Distributed	A7, multiplied by 0.3		
B2	Total number of loans made to residents of the county who live in municipalities without libraries	A5 values of all home county libraries added together		
B3	Core Funding Amount	A6 multiplied by 0.7		
B4	Percentage of Total County Use by Residents Without Libraries	A5 divided by B2		
B5	Variable Funding Amount	B1 multiplied by B4		
B6	Total Payment for the Following Year	B3 plus B5		
B7	Total of payments to home-county libraries	B6 values of all home county libraries added together		
C1	Operating Expenditures	Previous year data reported by library		
C2	Expenditures from Federal Sources	Previous year data reported by library		
C3	Total Loans Made	Previous year data reported by library		
C4	Service Unit Cost	C1 minus C2, divided by C3		
C5	Number of Loans Made to County Residents Without a Home Library	Previous year data reported by library		
C6	Cost of Service provided to County Residents Without a Home Library	C4 multiplied by C5		
C7	Total appropriation to adjacent county system member libraries	C6 values of all adjacent-county system member libraries added together		
C8	Variable Amount to be Distributed	C7 multiplied by 0.3		
C9	Total number of loans made to residents of the county who live in municipalities without libraries	C5 values of all adjacent-county system member libraries added together		
C10	Core Funding Amount	C6 multiplied by 0.7		
C11	Percentage of Total County Use by Residents Without Libraries	C5 divided by C9		
C12	Variable Funding Amount	C8 multiplied by C11		
C13	Total Payment for the Following Year	C10 plus C12		
C14	Total of payments to adjacent-county system member libraries	C13 values of all adjacent-county system member libraries added together		
D1	Operating Expenditures	Previous year data reported by library		
D2	Expenditures from Federal Sources	Previous year data reported by library		
D3	Total Loans Made	Previous year data reported by library		
D4	Service Unit Cost	D1 minus D2, divided by D3		
D5	Number of Loans Made to County Residents Without a Home Library	Previous year data reported by library		
D6	Cost of Service provided to County Residents Without a Home Library	D4 multiplied by D5		
D7	Payment Amount	D6 multiplied by 0.7		
D8	Total Walworth County Funding Requested by System Non-Member Libraries in Adjacent Counties for 20	D7 values of all adjacent-county system non-member libraries added together		