



# ARPA BROADBAND ACCESS GRANT ELIGIBILITY GUIDANCE, FY 2022

Presented by the Wisconsin Broadband Office



The Interim Rule from the Federal Department of the U.S. Treasury defines, "unserved and underserved households or businesses as one or more households or businesses that are not currently served by a wireline connection that reliably delivers at least 25 Mbps download speed and 3 Mbps of upload speed." Interim Rule, C.F.R. § 35.6(e)(2), 86 Fed. Reg. 26786, 26823.

- Area unserved by wireline internet access with at least 25 Mbps download and at least 3 Mbps upload.
- Area with reported wireline service from a provider offering at least 25/3 speeds.
- Area with no housing units, including water.

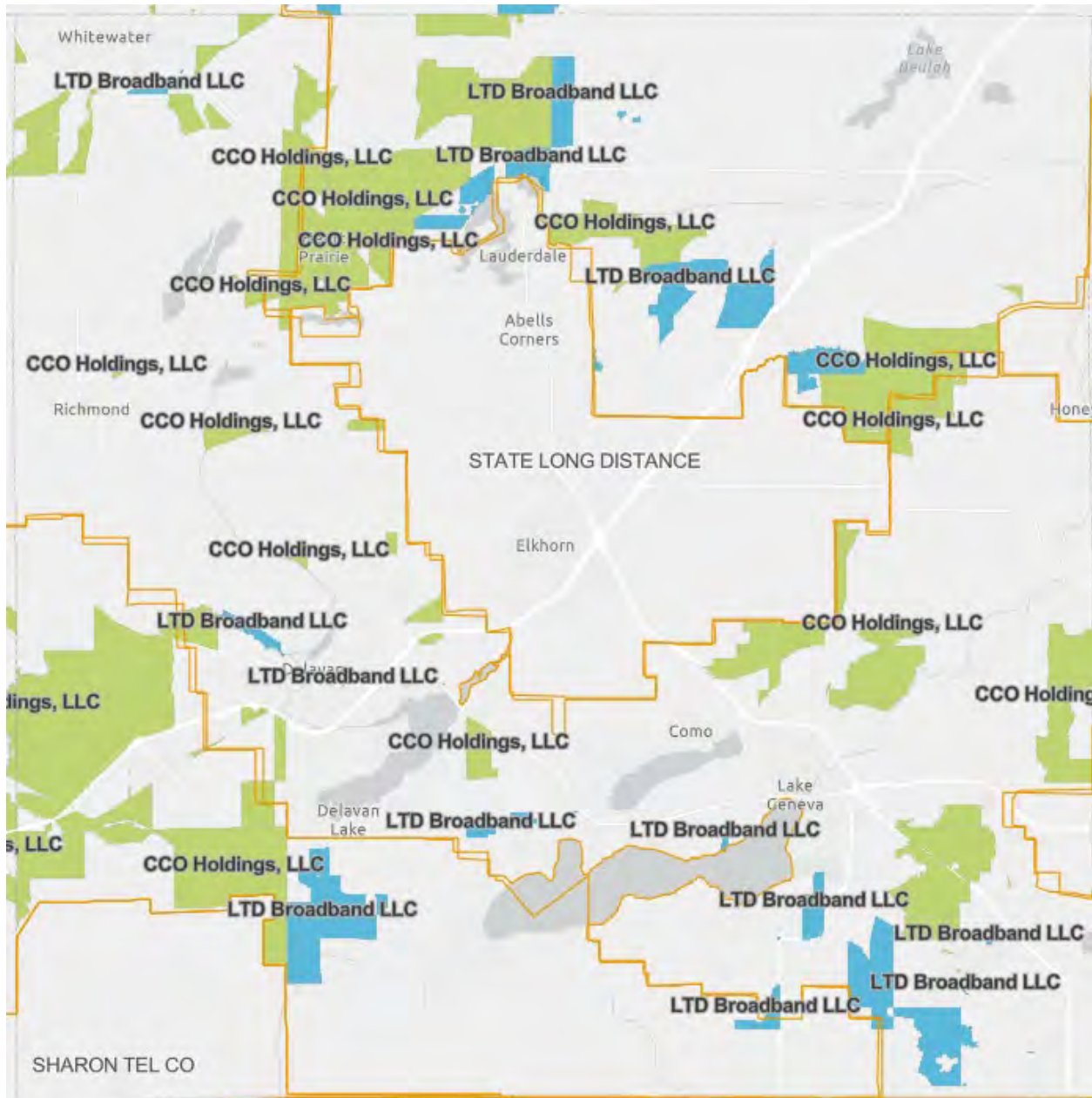
Visit the Broadband Expansion Grants page for more information:  
<https://psc.wi.gov/Pages/Programs/BroadbandGrants.aspx>.

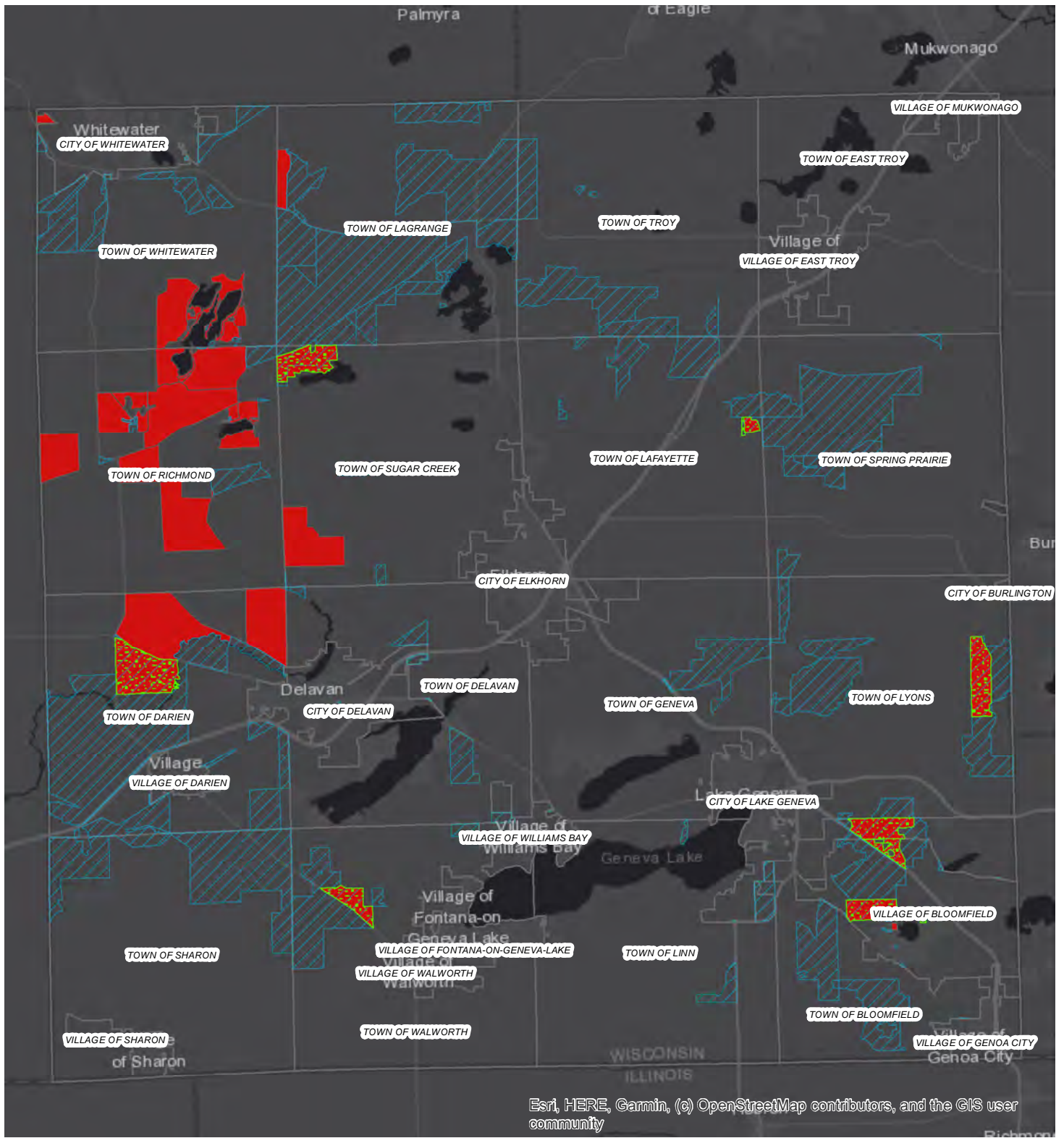
All information presented herein is believed to be accurate but is not guaranteed to be without error. All critical information should be independently verified.

Rural Digital Opportunity Fund (RDOF) - this program is through the FCC, but the second link provides a map shows where the current build out/improvement of internet services currently going on. I believe Spectrum is CCO Holdings.

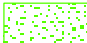



<https://www.fcc.gov/auction/904>

<https://experience.arcgis.com/experience/0b324cabf7b94d9ca34caa9361122d94/>



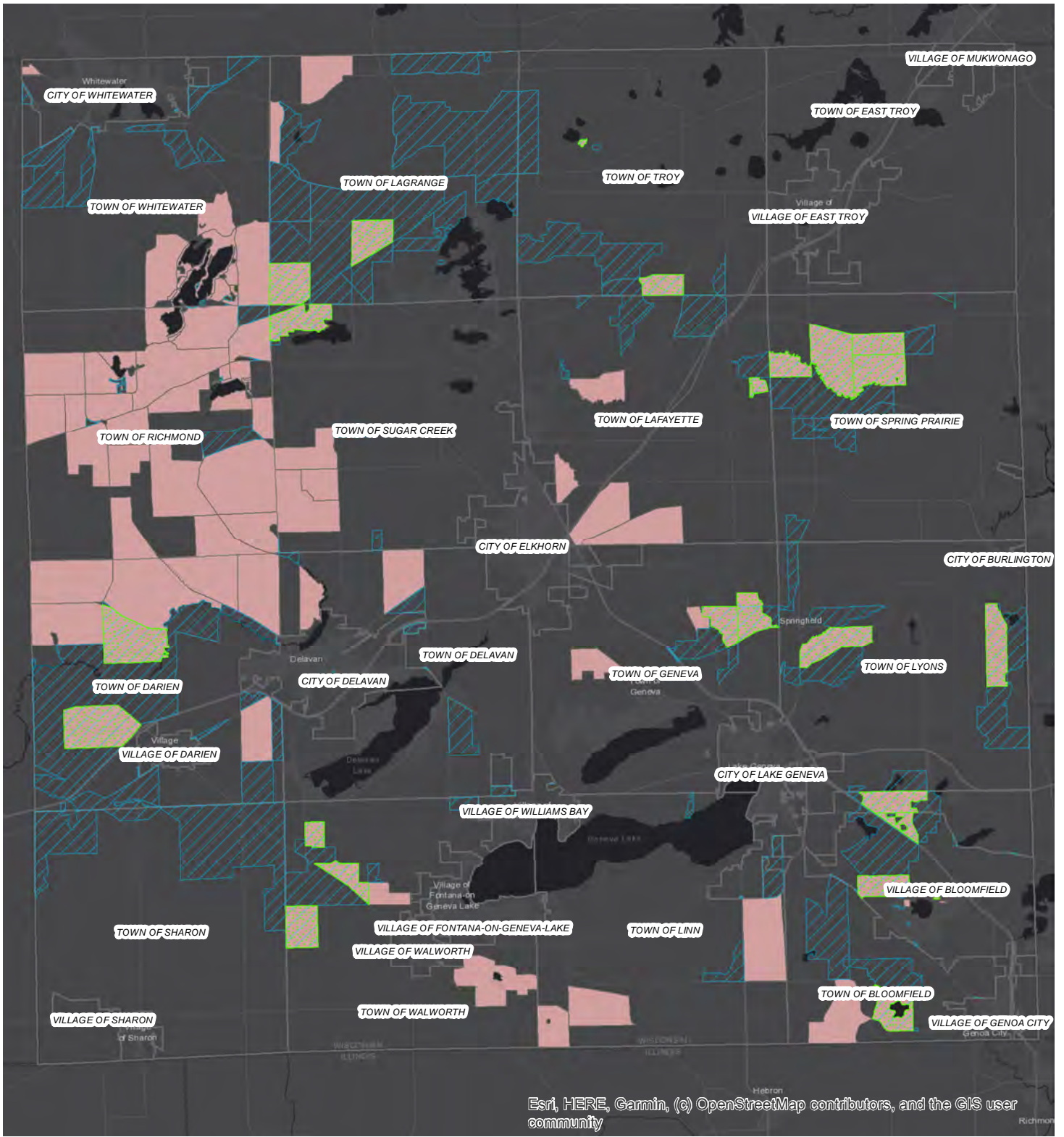


## Walworth County Broadband Eligibility Map

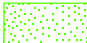

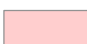

-  Coincident FCC and PSC Eligible Areas - 20+ housing units
-  FCC/ADORF - Walworth Auction904 Final Eligible Areas
-  PSC/ARPA - Unserved or Underserved Areas with 20 Housing Units or More
-  Municipal Boundaries



Created By: Walworth County GIS Division



## Walworth County Broadband Eligibility Map

-  Coincident FCC and PSC Eligible Areas
-  FCC/ADORF - Walworth Auction904 Final Eligible Areas
-  PSC/ARPA - Unserved or Underserved Areas with 10 Housing Units or More
-  Municipal Boundaries



Created By: Walworth County GIS Division